

SHAFT & COLLAR TYPE ZINC ANODE

Shaft & Collar Anodes can be manufactured As per customer requirement



ULTRA BRONZE CASTINGS

(Ultra Bronze is an alloy of Zinc ,Al & Cu)

Ultra Bronze has a whole range of potential stressed and functional applications. The high tensile properties of the alloy, coupled with its castability, enable the engineer to design in strength but at the same time reduce the overall material content of competitive materials. Ultra Bronze has good bearing properties, and is very suitable for wear resistant applications.



LEAD-TIN- ANTIMONY ANODES

VARIOUS TYPES OF ELECTROPLATING ANODES LIKE FLAT, ROUND ,CORROGATED WITH DIFFERENT HOOK SHAPES ARE DISPLAYED BELOW



LEAD - TIN BUSH TYPE ANODES

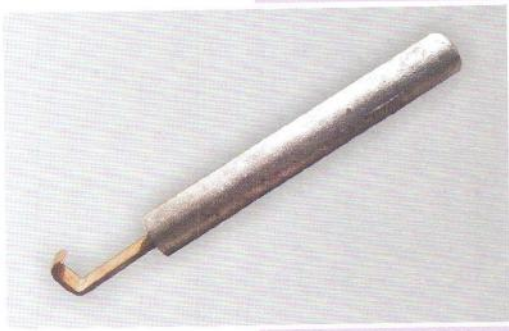
Lead Tin Bush type anodes are available as per requirement.

Chemical composition for Anodes : Tin - 7 to 10%, Lead 90 to 93%



LEAD TIN ANODE ROUND

Diameter 70 mm round anode

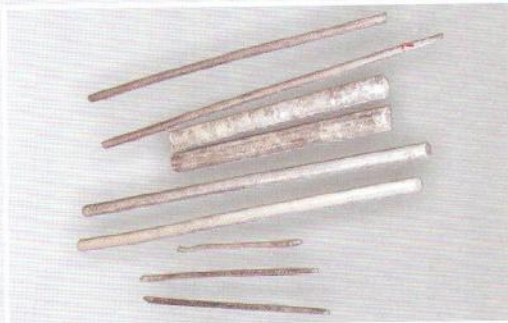


Diameter 25 mm round anode



LEAD TIN ANODE RODS

Anode Rods of various sizes like dia .6mm, 10mm, 15mm, 18 mm



Rods with Copper Hook



LEAD ANODES

Customize shaped Lead Anode



Oval Shaped Lead Tin Anode



HIGH PURITY ZINC ANODE

Zinc Anode in various Shapes like, square, round, flat, balls etc



Purity of such anodes is 99.990% pure Zn

