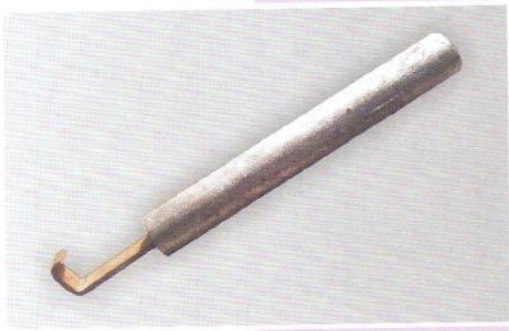


## LEAD TIN ANODE ROUND

Diameter 70 mm round anode

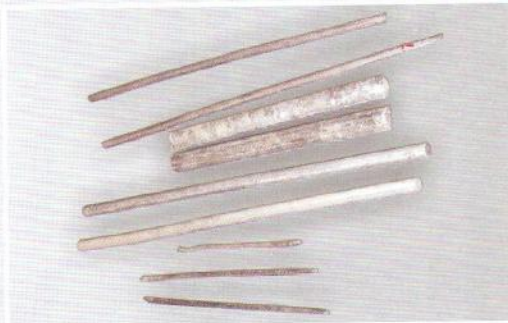


Diameter 25 mm round anode



## LEAD TIN ANODE RODS

Anode Rods of various sizes like dia .6mm, 10mm, 15mm, 18 mm



Rods with Copper Hook



## LEAD ANODES

Customize shaped Lead Anode



Oval Shaped Lead Tin Anode



## HIGH PURITY ZINC ANODE

Zinc Anode in various Shapes like, square, round, flat, balls etc



Purity of such anodes is 99.990% pure Zn

